



Temporary Traveling Exhibits Catalogue

The International Women's Air & Space Museum offers traveling exhibits to libraries, schools, and other organizations interested in highlighting women in aviation and aerospace. Exhibits generally contain 20-40 panels, which include photographs, reproduced documents, and label copy for use in your display. We ask that the following requirements be met by any organization that requests an exhibit. (See pages 2-3 for available exhibits):

- Exhibits must be requested at least four (4) weeks in advance.
- Exhibits will be in a protected environment – behind glass or in the view of organization personnel.
- IWASM brochures will be made available for patrons throughout the time the exhibit is on display.
- Label copy stating that the exhibit is courtesy of the International Women's Air & Space Museum will be displayed and included in all marketing and communications. This includes, but is not limited to: press releases, social media, and publications.
- Any exhibit piece that is destroyed, damaged, or missing will be replaced at the requesting institution's expense.
- All exhibit components must return to IWASM following guidelines provided by the museum, unless directed to forward to another institution. Additional charges may apply for delayed return of exhibit.
- Any exhibit piece that is destroyed or missing must be replaced.
- There is a \$75 fee for each rented exhibit– based on a 4-week time slot.

For more information contact the museum at
(216) 623-1111 or via email at sfisher@iwasm.org.

Available Traveling Temporary Exhibits



Katharine Wright-The Other Wright Brother:

Sister of the famous inventors Orville and Wilbur, Katharine was often referred to as the “Third Wright Brother.” Katharine traveled with her famous brothers promoting their invention, did a lot behind the scenes, and, because the brothers’ were known to be shy, often spoke on their behalf.

Contains approximately 22 panels.

Bessie Coleman and Her Daughters: Bessie Coleman was the first African-American woman to receive her pilot’s license. Since no one would teach her in the U.S. she traveled to France for her training. Though her life was short-lived, Bessie has inspired generations of African-American female pilots and astronauts.

Contains approximately 17 panels.



Women in Air & Space:

Women in Air & Space exhibits women from around the world who have contributed to air and space. From Aida De Acosta, the first woman to fly a dirigible, to Dr. Mae Jemison, the first African-American female astronaut.

Contains approximately 50 panels.

The Mercury 13: The little known story of the thirteen women who went through secret testing during the 60s to prove that women could be astronauts, only to have the program shut down by Congress.

Contains approximately 25 panels.



100 Ohio Women in Air & Space:

This exhibit highlights the over 100 years of achievements of Ohio women in the aviation and aerospace fields, from the early days to the space age. The exhibit is pick-up only. Contains approximately 125 panels.

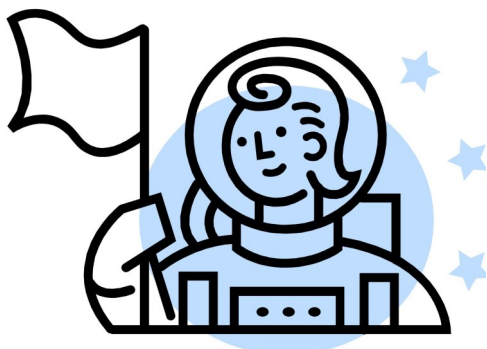


Flight to Fame-The Life and Legacy of

Amelia Earhart: This exhibit is an overview of the short but brilliant career of Amelia Earhart, known as Lady Lindy, through pictures and documents. Includes information about her life as well as popular theories as to her disappearance. Contains approximately 34 panels.

Women of War- Women Airforce Service

Pilots of WWII: These extraordinary women flew for the Army Air Force in 1943 and 1944, during the height of World War II. The WASP helped fill the need for more military pilots by doing “stateside” flying jobs. From doing test flights to delivering the aircraft, these women did it all. Contains approximately 19 panels.



Rocket Girls-Female Astronauts in the Space Shuttle Program:

When NASA’s Space Shuttle Program ended in 2011, the International Women’s Air & Space Museum saw a unique opportunity to spotlight female astronauts and their role in the Space Shuttle Program. Prior to the Space Shuttle Program, women had never flown in space at NASA. Approximately 26 panels.



This page purposefully left blank.



Traveling Exhibit Request Form

Please identify which exhibit you are interested in:

- Flight to Fame - Amelia Earhart
- Rocket Girls - Female Astronauts
- The Other Wright Brother - Katharine Wright
- Women of War - The WASP of WWII
- 100 Ohio Women in Air & Space
- Women in the Air
- Bessie Coleman and 'Her Daughters'
- The Mercury 13

Date of Request: _____

Primary Contact: _____

Organization Name: _____

Street Address: _____

City: _____ State: _____ Zip: _____

Alt. Contact: _____ Tel.#: _____

Contact email: _____

Date Needed: _____ Date Return: _____

Notes/Requests: _____

Organization Agrees to the following:

- Exhibits must be requested at least four (4) weeks in advance.
- Exhibits will be in a protected environment – behind glass or in the view of organization personnel.
- IWASM brochures will be made available for patrons throughout the time the exhibit is on display.
- Label copy stating that the exhibit is courtesy of the International Women's Air & Space Museum will be displayed and included in all marketing and communications. This includes, but is not limited to: press releases, social media, and publications.
- Any exhibit piece that is destroyed, damaged, or missing will be replaced at the requesting institution's expense.
- All exhibit components must return to IWASM following guidelines provided by the museum, unless directed to forward to another institution.

Signature: _____ Title: _____

Date: _____

Return to IWASM via mail or email to sfisher@iwasm.org

1501 North Marginal Road, Rm 165, Cleveland, Ohio, 44114
Telephone: (216) 623-1111 | www.iwasm.org