



Temporary Traveling Exhibits Catalogue

The International Women's Air & Space Museum offers traveling exhibits to libraries, schools, and other organizations interested in highlighting women in aviation and aerospace. Exhibits generally contain 20-40 panels, which include photographs, reproduced documents, and label copy for use in your display. We ask that the following requirements be met by any organization that requests an exhibit. (See *below for available exhibits*):

- ***Exhibits must be requested at least four weeks in advance. Rentals are first come, first serve.***
- *Exhibits should be in a protected environment – behind glass or in the view of organization personnel. They may be displayed on shelving, or by utilizing Velcro or Command Strips.*
- *Museum brochures must be made available for patrons throughout the time the exhibit is on display.*
- *Label copy stating that the exhibit is courtesy of the International Women's Air & Space Museum must be displayed.*
- *Any exhibit piece that is destroyed or missing must be replaced.*
- *Exhibits must be returned to the museum (or other specified destination) in a timely manner or additional charges may apply. Exhibits are returned at your organization's expense.*
- *There is a \$75 fee for rental– based on a 4-week time slot.*

For more information contact the museum at
(216) 623-1111 or via email at halexander@iwasm.org.

Available Traveling Temporary Exhibits



Katharine Wright-The Other Wright Brother:

Sister of the famous inventors Orville and Wilbur, Katharine was often referred to as the “Third Wright Brother.” Katharine traveled with her famous brothers promoting their invention, did a lot behind the scenes, and, because the brothers’ were known to be shy, often spoke on their behalf.

Contains approximately 22 panels.

Bessie Coleman and Her Daughters: Bessie Coleman was the first African-American woman to receive her pilot’s license. Since no one would teach her in the U.S. she traveled to France for her training. Though her life was short-lived, Bessie has inspired generations of African-American female pilots and astronauts.

Contains approximately 17 panels.



Women in Air & Space:

Women in Air & Space exhibits women from around the world who have contributed to air and space.

From Aida De Acosta, the first woman to fly a dirigible, to Dr. Mae Jemison, the first African-American female astronaut.

Contains approximately 50 panels.

The Mercury 13: The little known story of the thirteen women who went through secret testing during the 60s to prove that women could be astronauts, only to have the program shut down by Congress.

Contains approximately 25 panels.



100 Ohio Women in Air & Space:

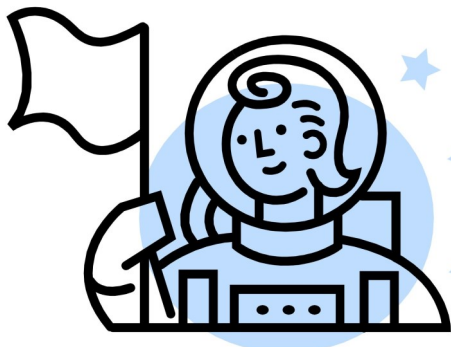
This exhibit highlights the over 100 years of achievements of Ohio women in the aviation and aerospace fields, from the early days to the space age. The exhibit is pick-up only. Contains approximately 125 panels.



Flight to Fame-The Life and Legacy of

Amelia Earhart: This exhibit is an overview of the short but brilliant career of Amelia Earhart, known as Lady Lindy, through pictures and documents. Includes information about her life as well as popular theories as to her disappearance. Contains approximately 34 panels.

Women of War- Women Airforce Service Pilots of WWII: These extraordinary women flew for the Army Air Force in 1943 and 1944, during the height of World War II. The WASP helped fill the need for more military pilots by doing “stateside” flying jobs. From doing test flights to delivering the aircraft, these women did it all. Contains approximately 19 panels.



Rocket Girls-Female Astronauts in the Space Shuttle Program:

When NASA’s Space Shuttle Program ended in 2011, the International Women’s Air & Space Museum saw a unique opportunity to spotlight female astronauts and their role in the Space Shuttle Program. Prior to the Space Shuttle Program, women had never flown in space at NASA. Approximately 26 panels.



International Women's Air & Space Museum Traveling Exhibit Request

Exhibit Requested: _____

Organization Name: _____

Street Address: _____

City: _____ State: _____ Zip: _____

Contact: _____ Contact Tel.#: _____

Contact email: _____

Date Needed: _____ Date of Return: _____

Special Notes/Requests: _____

Organization agrees to the following:

- Exhibit must be requested at least four weeks in advance.
- Exhibit will be in a protected environment – behind glass or in the view of organization personnel.
- Museum brochures will be made available for patrons throughout the time the exhibit is on display.
- Label copy stating that the exhibit is courtesy of the International Women's Air & Space Museum will be displayed.
- Any exhibit piece that is destroyed or missing will be replaced.
- Exhibit will be sent to our site and returned to museum (unless directed to send it elsewhere.)

Signature: _____ Title: _____

Date: _____

Return to IWASM via mail, fax, or email to halexander@iwasm.org

International Women's Air & Space Museum
1501 North Marginal Rd, Rm 165 • Cleveland, Ohio • 44114
Telephone: (216) 623-1111 • Fax: (216) 623-1113
www.iwasm.org